

BMXDAI1614H

discrete input X80 - 16 channel isolated
supervised - 100..120 V AC - severe



Product availability: Non-Stock - Not normally stocked in distribution facility



Main

Range of Product	Modicon X80
Product or Component Type	Discrete input module
Product Specific Application	For severe environments
Discrete input number	16
Discrete input type	Isolated
Input type	Capacitive
Discrete input voltage	100...120 V AC positive
Discrete input current	2 mA

Complementary

Input compatibility	With 2-wire/3-wire proximity sensors IEC 60947-5-2 With 2-wire/3-wire proximity sensors IEC 61131-2 Type 1
Network Frequency	50/60 Hz
Network frequency limits	47...63 Hz
Voltage range	85...132 V
Current state 1 guaranteed	≥ 2 mA
Current state 0 guaranteed	≤ 1 mA
Input impedance	14000 Ohm
Insulation resistance	> 10 MOhm 500 V DC
Power dissipation in W	5 W
AC activation filtering time	10 Ms
AC deactivation filtering time	20 Ms
Typical current consumption	76 mA 3.3 V DC
MTBF reliability	970000 H
Protection type	1 external fuse per group of channel 0.25 A fast blow
Voltage detection threshold	< 40 V AC sensor fault > 85 V AC sensor OK

Status LED	Module operating (RUN) 1 LED Green) Channel diagnostic 1 LED per channel Green) Module error (ERR) 1 LED Red) Module I/O 1 LED Red)
Net Weight	0.35 Lb(US) (0.157 kg)

Environment

IP Degree of Protection	IP20
Environmental characteristic	Gas resistant class Gx Gas resistant class 3C4 Dust resistant class 3S4 Sand resistant class 3S4 Salt resistant level 2 Mold growth resistant class 3B2 Fungal spore resistant class 3B2
Dielectric strength	1780 V AC 50/60 Hz 1 min
Vibration resistance	3 gn
Shock resistance	30 gn
Ambient Air Temperature for Storage	-40...185 °F (-40...85 °C)
Ambient air temperature for operation	-13...158 °F (-25...70 °C)
Relative humidity	0...95 % -13...158 °F (-25...70 °C) without condensation
Protective treatment	Conformal coating
Operating altitude	0...6561.68 ft (0...2000 m) 2000...5000 m with derating factor



Ordering and shipping details

Category	18160 - MODICON M340
Discount Schedule	PC34
GTIN	3606489485016
Nbr. of units in pkg.	1
Package weight(Lbs)	10.37 Oz (294 g)
Returnability	No
Country of origin	FR

Packing Units

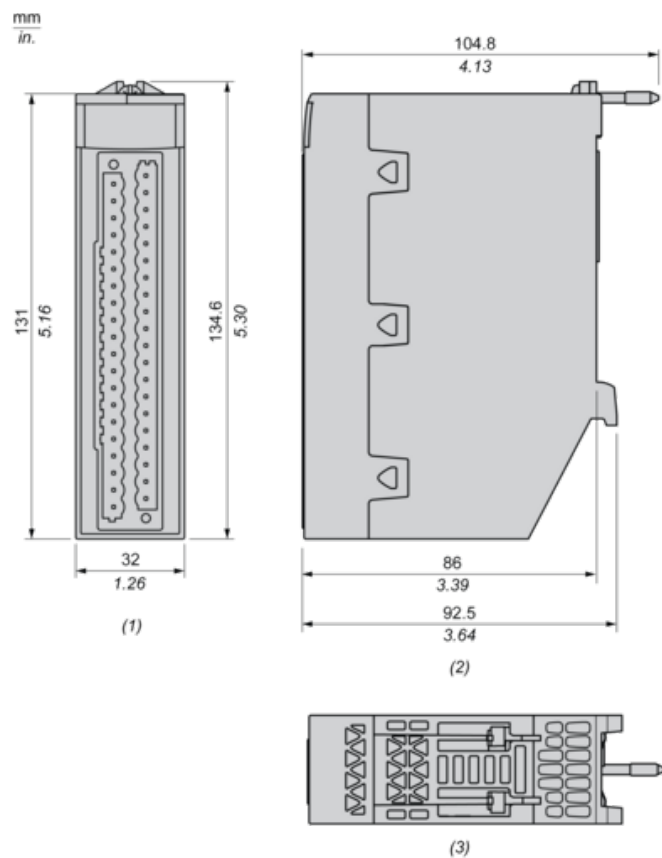
Unit Type of Package 1	PCE
Package 1 Height	2.24 In (5.7 cm)
Package 1 width	7.09 In (18 cm)
Package 1 Length	10.24 In (26 cm)
Unit Type of Package 2	S03
Number of Units in Package 2	8
Package 2 Weight	6.33 Lb(US) (2.87 kg)
Package 2 Height	11.81 In (30 cm)
Package 2 width	11.81 In (30 cm)
Package 2 Length	15.75 In (40 cm)

Offer Sustainability

Sustainable offer status	Green Premium product
California proposition 65	WARNING: This product can expose you to chemicals including: Lead and lead compounds, which is known to the State of California to cause cancer and birth defects or other reproductive harm. For more information go to www.P65Warnings.ca.gov
REACH Regulation	 REACH Declaration
EU RoHS Directive	Pro-active compliance (Product out of EU RoHS legal scope)  EU RoHS Declaration
Mercury free	Yes

RoHS exemption information	Yes
China RoHS Regulation	China RoHS Declaration
Environmental Disclosure	Product Environmental Profile
Circularity Profile	End Of Life Information
WEEE	The product must be disposed on European Union markets following specific waste collection and never end up in rubbish bins.

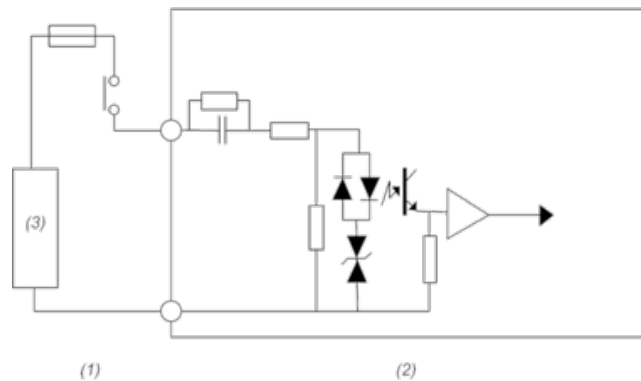
Dimensions



- (1) Front view
- (2) Right view
- (3) Top view

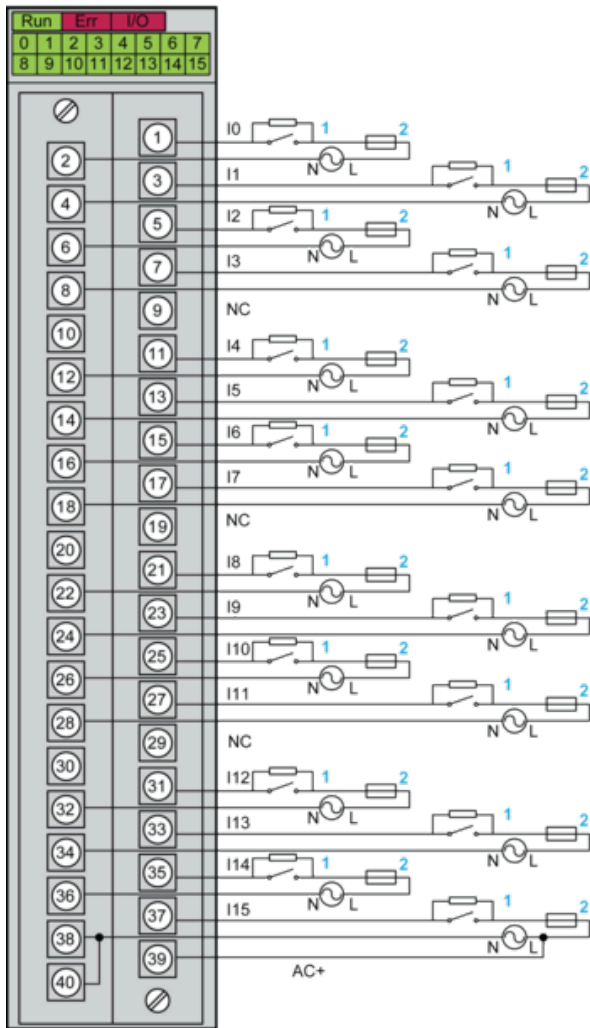
Connecting the Module

Input Circuit Diagram



- (1) Process
- (2) Module
- (3) Power supply

Module Connection



1 : External resistor for open wire detection function

2 : Fast blow fuse of 0.25A

AC+ : Input pin for IO supply monitoring function on channel 15

NC : Not connected

Power supply : 100...120 Vac

NOTE : The maximum input voltage is 132 Vrms@63 Hz. Any over voltage will damage the module.

Product Life Status : **Commercialised**